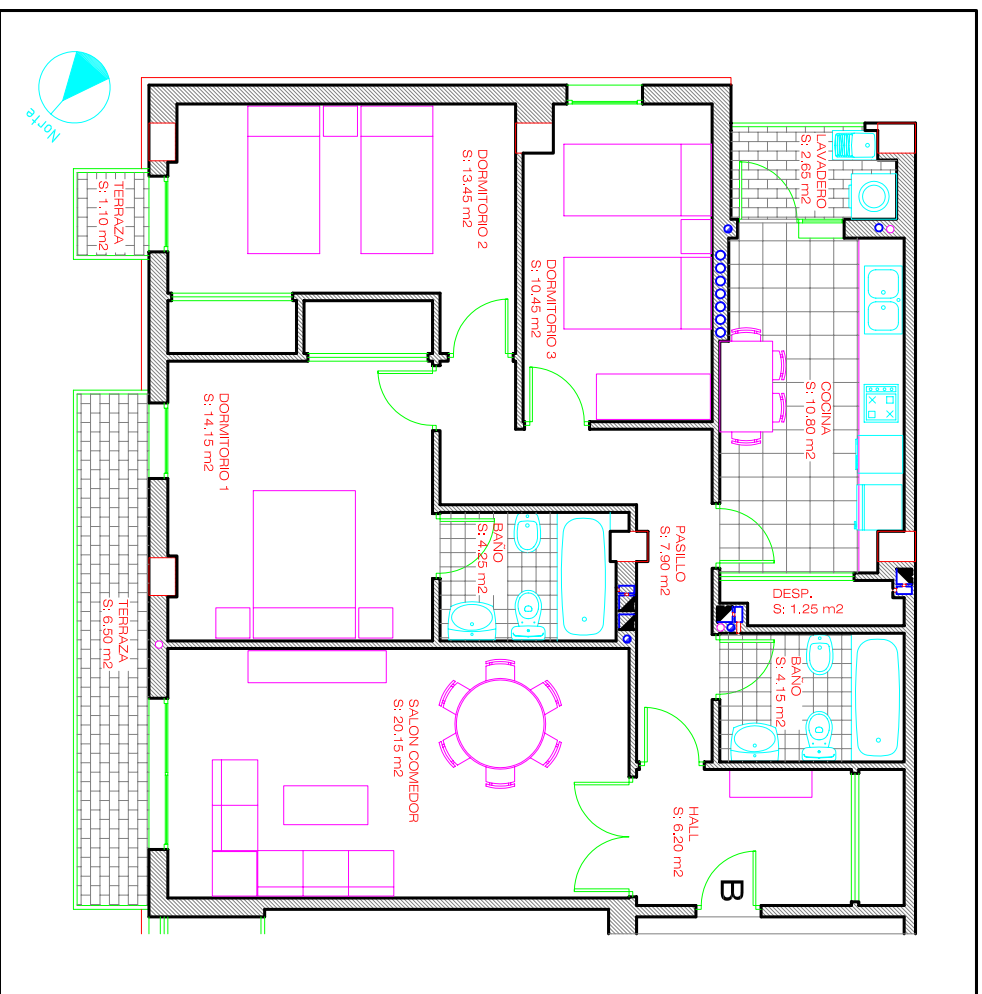
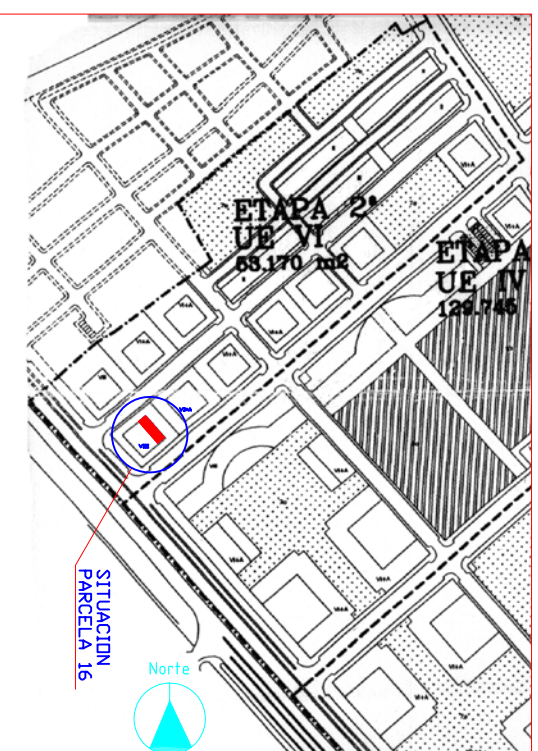


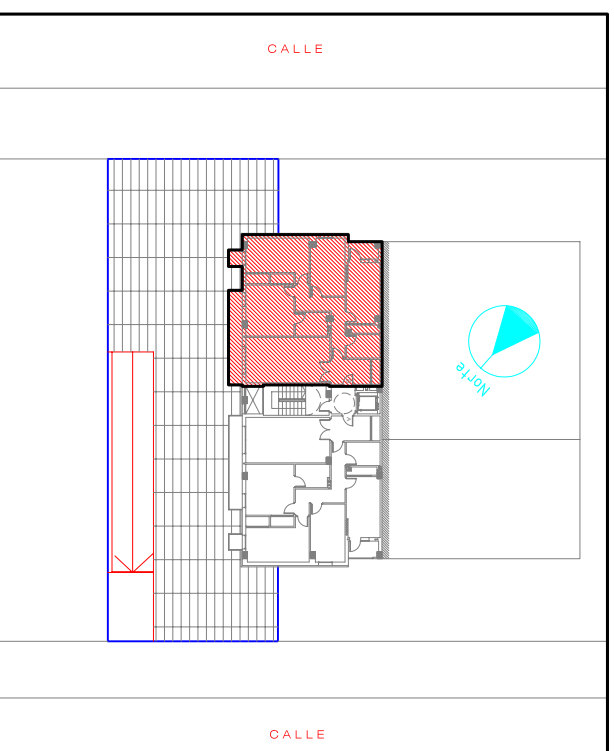
SITUACION:



PLANTA PRIMERA " VIVIENDA TIPO B"

ESCALA 1/100

SUP. CONST. + ESP. COMUN 124,06 m2
SUP. UTIL 103,00 m2



14 VIVIENDAS, BAJOS COMERCIALES, TRASTEROS Y GARAJE
U.E. VI P.P. CR-5, PARCELA 16, MANZANA E1. MURCIA

PROMUEVE: EUSEBIO ABELLAN S.L.

ARQUITECTO: NICOLAS E. CARAZO DIAZ